

# MONTHLY MEMBERSHIP PROGRESS REPORT

District 27 D1

Results as of: 4/30/2026

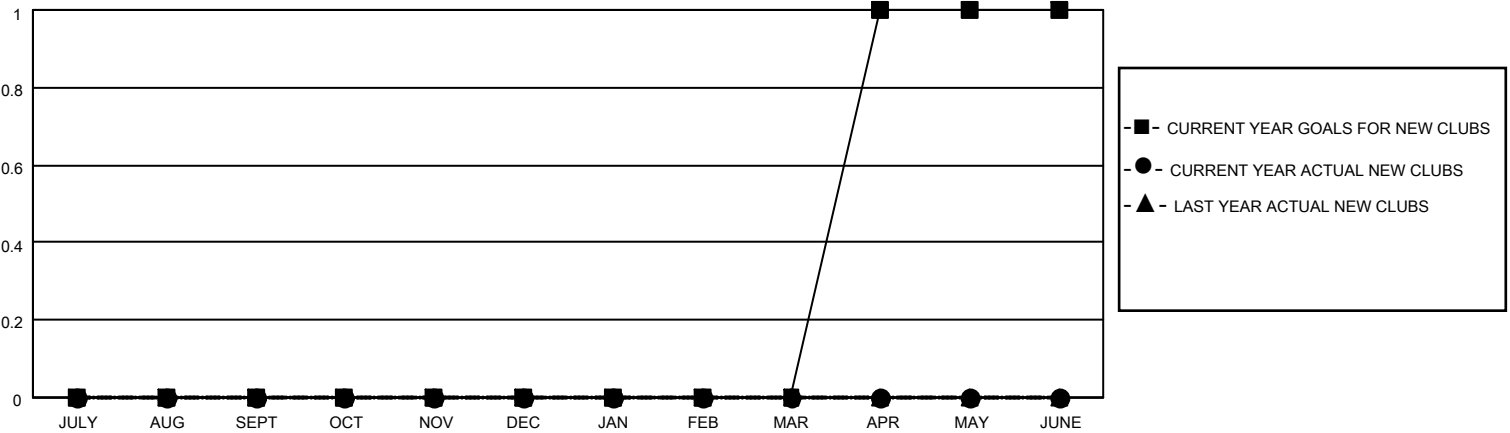
GMT:

LOCATION WISCONSIN

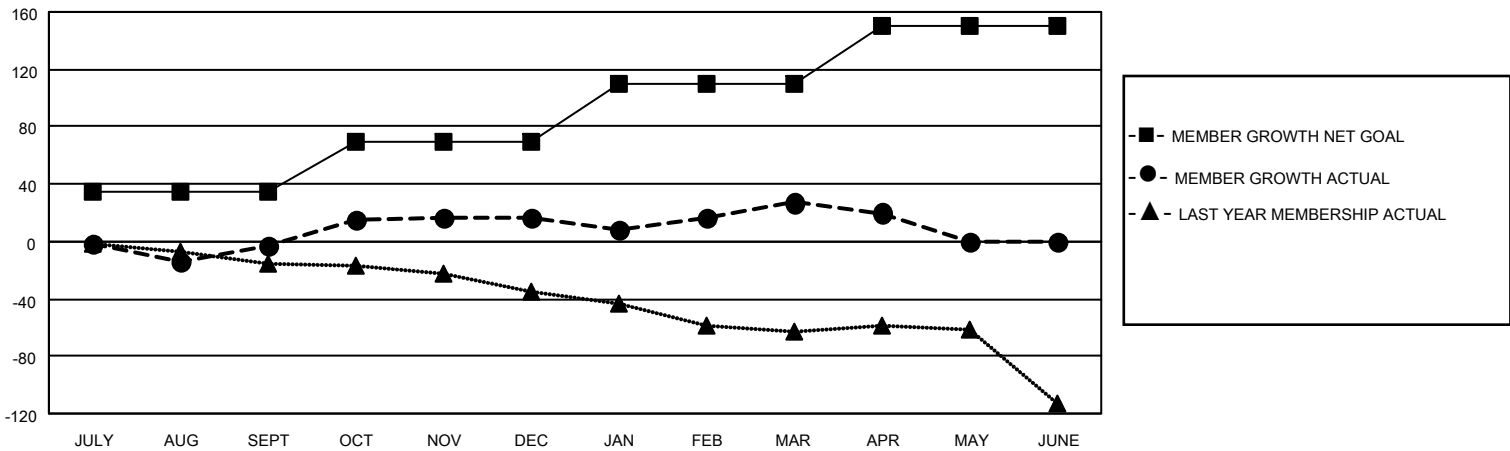
GMT CA

Clubs				Members			
RESULTS FOR 2025-2026				RESULTS FOR 2025-2026			
QUARTER	NEW CLUB GOAL	NEW CLUBS	DROPPED CLUBS	QUARTER	MEMBER GROWTH NET GOAL	MEMBER GROWTH ACTUAL	DROPPED MEMBERS ACTUAL (including transfers)
JULY/AUG/SEPT	0	0	0	JULY/AUG/SEPT	35	70	48
OCT/NOV/DEC	0	0	0	OCT/NOV/DEC	35	49	26
JAN/FEB/MAR	0	0	0	JAN/FEB/MAR	40	56	46
APR/MAY/JUNE	1	0	0	APR/MAY/JUNE	40	6	12

GOALS AND ACTUAL NEW CLUBS CUMULATIVE



GOALS AND ACTUAL MEMBERS CUMULATIVE



DROPPED CLUBS: 0	42 CLUBS OF 57 ADDED 1 OR MORE NEW MEMBERS	<b>GENDER DISTRIBUTION</b> MALE 1,352 (66.14%) FEMALE 692 (33.86%)
<b>DROPPED MEMBERS</b> DECEASED 28 CLUB CANCELLED 0 OTHER 104 TOTAL 132	<a href="#">CLICK HERE FOR CUMULATIVE MEMBERSHIP DATA</a>	TOTAL FAMILY UNIT MEMBERS 475 FAMILY MEMBERS PAYING HALF DUES 241